

	PETROL 95 ULP	PETROL 93 ULP & LRP	DIESEL 0.05%	DIESEL 0.005%	ILL. PAR.
GAUTENG PUMP PRICE (SA c/l) AS FROM 03/06/2020	1,340.000	1,320.000	-	-	-
WHOLESALE PRICE (SA c/l) AS FROM 03/06/2020	-	-	1,130.560	1,138.960	489.828
SINGLE NATIONAL MAXIMUM RETAIL PRICE	-	-	-	-	597.000
BASIC FUEL PRICE - 15/06/2020 (SA c/l)	535.042	516.394	548.245	551.740	490.925
PRESS RELEASE CONTRIBUTION TO BFP 03/06/2020 - 15/06/2020 (SA c/l)	392.770	382.770	379.630	388.030	285.128
UNIT OVER/(UNDER) RECOVERY - 15/06/2020 (SA c/l)	(142.272)	(133.624)	(168.615)	(163.710)	(205.797)
AVERAGE BASIC FUEL PRICE 29/05/2020 - 15/06/2020	520.519	500.559	523.752	527.970	469.964
AVERAGE UNIT OVER/(UNDER) RECOVERY 29/05/2020 - 15/06/2020	(157.249)	(147.289)	(149.622)	(145.190)	(194.836)

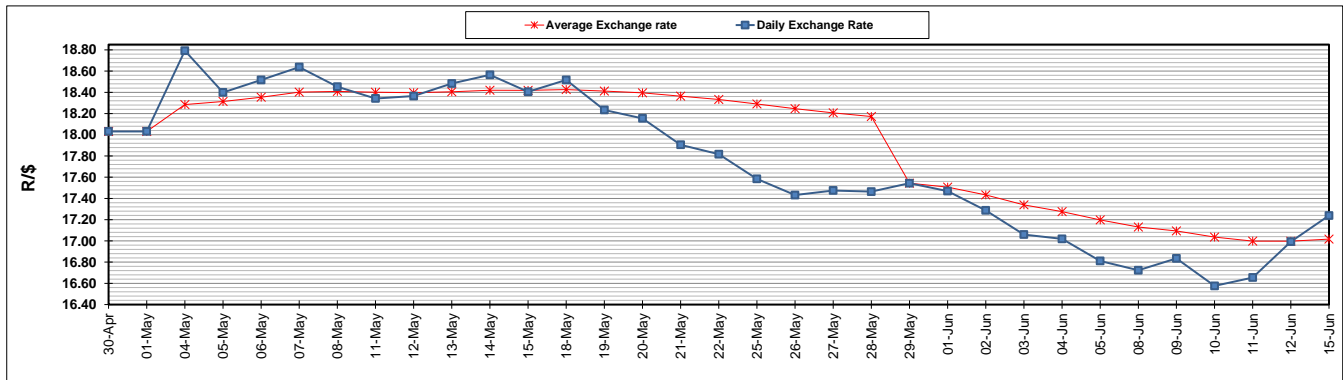
### ANALYSIS MOVEMENT OF AVERAGE OVER/(UNDER) RECOVERY

- MOVEMENT IN INTERNATIONAL PRODUCT PRICES
- MOVEMENT IN EXCHANGE RATE
- AVERAGE UNIT OVER/(UNDER) RECOVERY 29/05/2020 - 15/06/2020

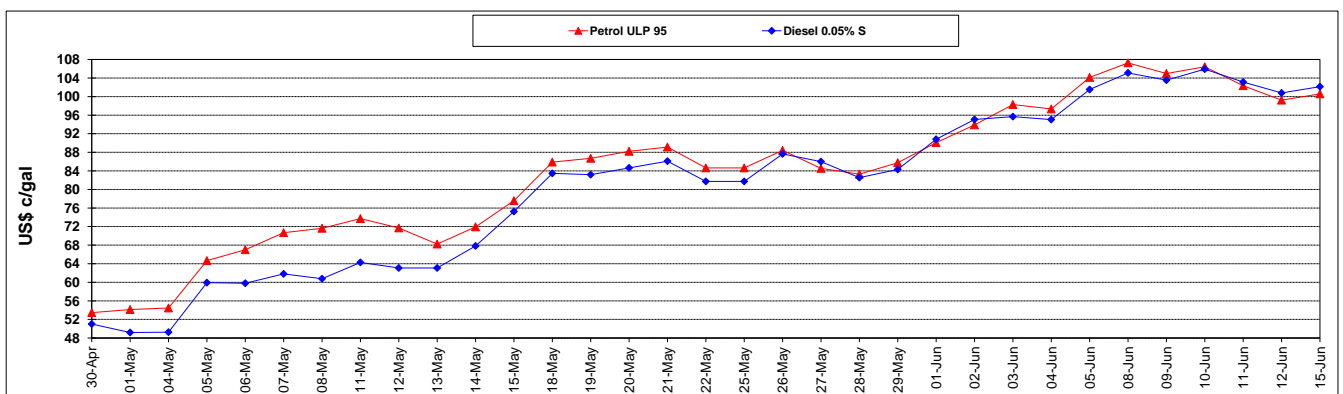
	PETROL 95	PETROL 93	DIESEL 0.05%	DIESEL 0.005%	ILL. PAR.
MOVEMENT IN INTERNATIONAL PRODUCT PRICES	(192.550)	(181.236)	(185.142)	(180.996)	(226.708)
MOVEMENT IN EXCHANGE RATE	35.301	33.947	35.520	35.806	31.872
AVERAGE UNIT OVER/(UNDER) RECOVERY 29/05/2020 - 15/06/2020	(157.249)	(147.289)	(149.622)	(145.190)	(194.836)

### R/\$ EXCHANGE RATE - (R/\$17.2389 - 15/06/2020)

#### EXCHANGE RATE USED IN BASIC FUEL PRICE



#### INTERNATIONAL PRODUCT PRICES OF BASKET USED IN BASIC FUEL PRICE



#### BASIC FUEL PRICE IN SA CENTS PER LITRE

